

WEF 2026



- **General Pilot Briefing «WEF 2026» for IFR leaving
and joining flights (Y/Z flightplans)**

- **For detailed information check NOTAMs**

Airspace Restrictions

(AIRAC AIP SUP: 008/2025)

- Airspace restrictions related to World Economic Forum 2026 lasts on Friday 16th January and from Monday 19^h until 25th January 2026
- PPR mandatory for flights with Y/Z flight plan to/from LSZS
- PPR managed by Engadin Airport.

→ Refer to www.engadin-airport.ch

- The PPR-number that you will get with our confirmation, has to be inserted in field 18 of your flightplan.

Airspace Restrictions

General Rules for joining/leaving operations:

(AIRAC AIP SUP: 008/2025)

- Flights within LSR90 operating under instrument flight rules (IFR) are only permitted for air traffic with departure / arrival Samedan (LSZS) with Z- or Y- flight plans and departures Samedan (LSZS) with I- flight plans via SID RONAG1E/1V.
- Special procedures apply for those flights as described on page 8 and page 9 of this briefing.

Airspace Restrictions

General Rules for joining/leaving operations:

(AIRAC AIP SUP: 008/2025)

- **Radio Failure:**

In the event of a radio failure, the transponder shall be set to code **7600** and the following procedures apply.

Departure LSZS:

- under IFR continue according to FPL.
- under VFR return to LSZS.

Arrival LSZS:

- under IFR remain outside LSR and divert to alternate.
- under VFR, continue according approach chart to LSZS.

(In such cases a visual identification by the Swiss Air Force may be expected.)

Airspace Restrictions

General Rules for joining/leaving operations: (AIRAC AIP SUP: 008/2025)

- Additional restrictions may be imposed by the Swiss Air Force at all times (also at short notice).
- Extensive MIL air traffic may exist also outside the restricted area.
- The lower limit of Airspace C over the Alps during the activation period of LS-R90 is FL130.
- All publications, particularly additional NOTAMs, route availability document (RAD) and EAUP/EUUP shall be checked and adhered to.
- ATC instructions shall be strictly complied with.
- Any flight departing from Switzerland seeking approval to insert STS/ATFMX in flightplan item 18 shall strictly adhere to the rules and procedures described in AIP Switzerland ENR 1.9.2.2/3.

Activation of LS-R90

Restriction of the airspace within CH and FL

(AIRAC AIP SUP: 008/2025)

- **Activation:**

Friday 2026/01/16 from 0700 – 1600 UTC

and

Monday 2026/01/19 from 0700 UTC

until

Saturday 2026/01/25 1600 UTC (H24)

Note: Changes to activation times may be announced via NOTAM and/or EAUP/EUUP.

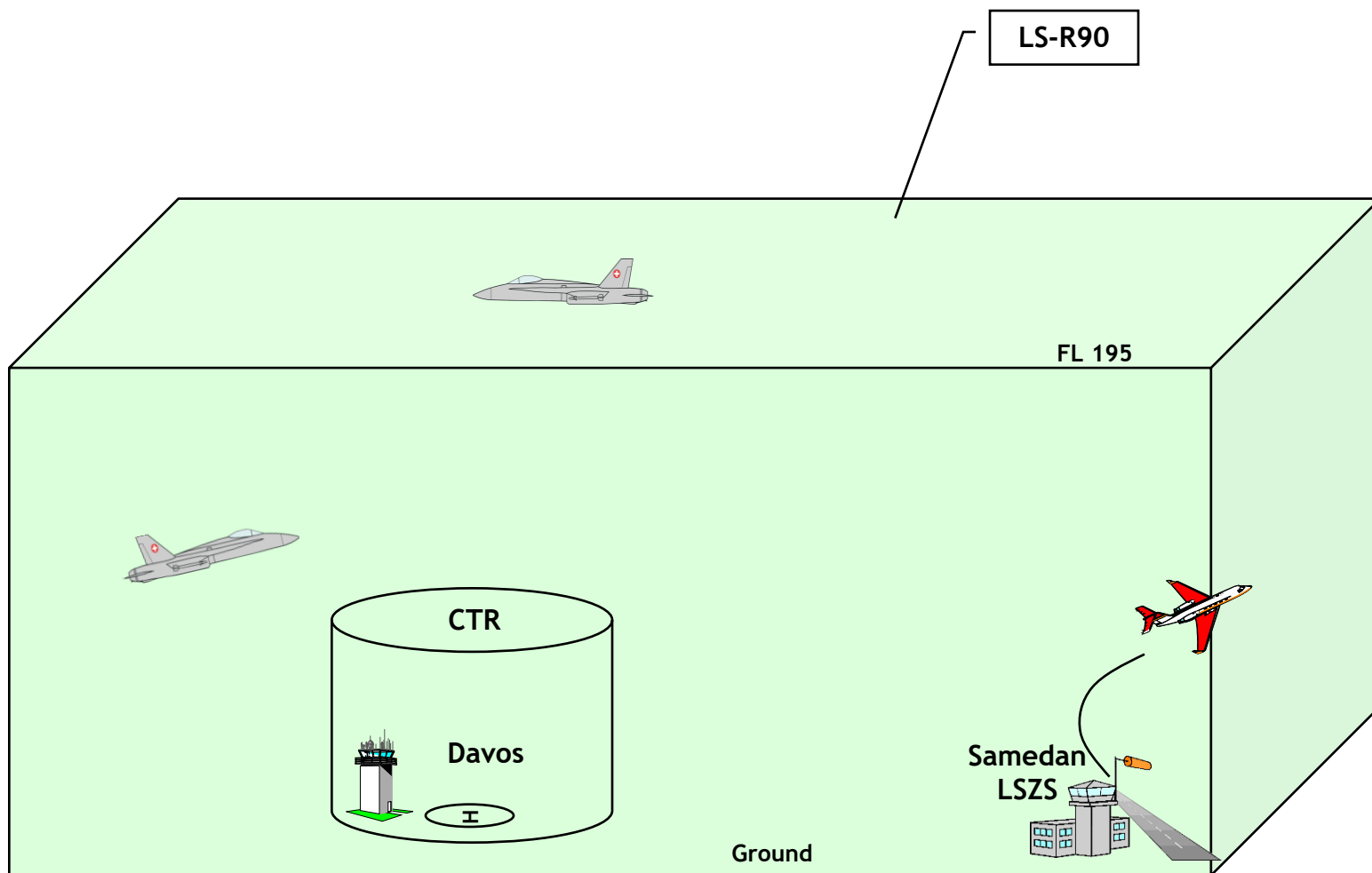
LS-R90 TEMPO Restricted Area

(AIRAC AIP SUP: 008/2025)

Dimension basically identical to WEF 2025

- Centre: Davos 46°48'53"N/009°50'58"E, Radius **2.7NM**
GND to FL075
- Dimensions:
 - Lateral: **25 NM** radius around Davos above Swiss territory only (including the Principality of Liechtenstein).
 - Vertical extent:
Tempo **LS-R90**: **GND to FL 195**

Pattern R-Area



Procedures for IFR flights to / from Samedan Airport (LSZS)

(AIRAC AIP SUP: 008/2025)

The following IFR procedures are temporarily suspended:

- SID PELAD 1W
- SID PELAD 1V
- VISUAL APCH WIRH RNP GUIDANCE RWY 03
- RNAV APCH RWY 21
- Aerodrome VFR Area Chart for Y and Z ATC FPL

Procedures for joining/leaving flights to / from Samedan Airport (LSZS)

(AIRAC AIP SUP: 00682025)

The following IFR procedures are available without using the dedicated holding at RONAG and after ATC instruction only (not available for flight planning):

- SID RONAG 1E
- SID RONAG 1V
- PPR mandatory for flights with Y/Z flight plan to/from LSZS.
- PPR managed by Engadin Airport. (see: www.engadin-airport.ch).

Routing for arrivals LSZS with Y-FPL

(AIRAC AIP SUP: 008/2025)

- **ATS Route Z83 segment DETRI-GUGSA (and vice versa) only available and compulsory for ADEP/ADES LSZS except ADEP LSZS via ATS Route L613 segment RONAG-SUXAN.**
- All flights arriving from the **south** shall file their FPL via *Z651 DETRI Z83 GUGSA (then VFR)*;
- All flights arriving from the **north** shall file their FPL via *N850 SOSON Z119 DETRI Z83 GUGSA (then VFR)*.
- **The reporting point GUGSA and the associated holding pattern are the IFR clearance limit.**
- **All flights with destination LSZS that are unable to cancel their IFR flight plan latest at GUGSA shall divert to their alternate aerodrome.**
- **Holding over GUGSA is limited to 1 holding pattern per flight.**

Arrivals LSZS RWY 03

Procedure for approach after IFR cancellation:

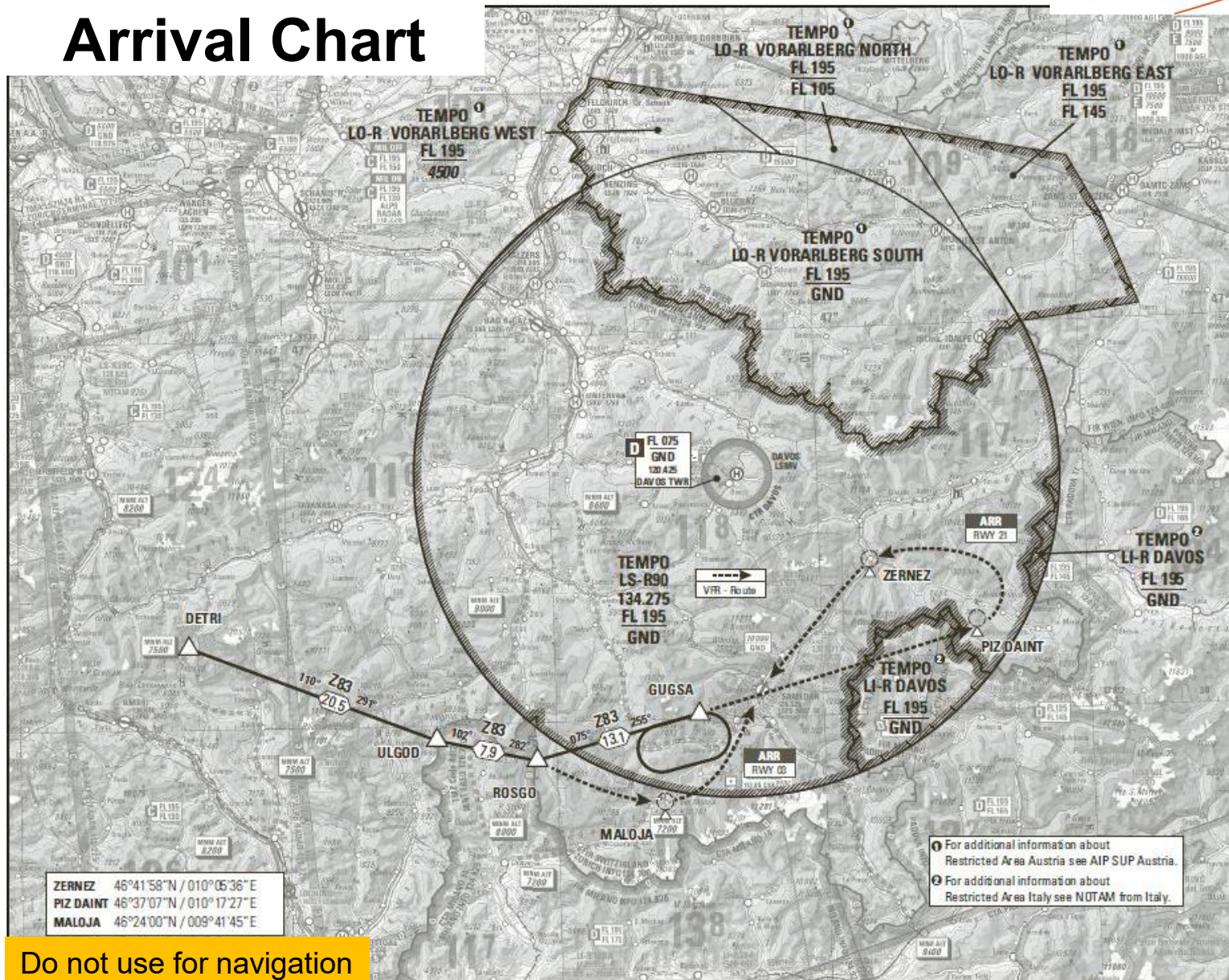
- Arrivals to RWY 03 shall prepare to cancel IFR at ROSGO.
- After ROSGO, such flights shall proceed VFR via MALOJA to LSZS.
- If unable to cancel IFR latest at ROSGO, flights shall continue on Z83 into the GUGSA holding pattern and cancel IFR within the holding pattern.
- If unable to proceed VFR to LSZS after GUGSA, flights shall leave the LSR via right turn ROSGO Z83 DETRI.
- After IFR cancellation, proceed VFR south of Z83 via Maloja to LSZS.
- Maintain radio contact with ZURICH DELTA (119.225) until passing FL 130, thereafter contact SAMEDAN INFO (135.325);

Arrivals LSZS RWY 21

Procedure for approach after IFR cancellation:

- Arrivals to RWY 21 shall prepare for IFR cancellation latest at GUGSA.
- After GUGSA, flights shall proceed VFR direct to PIZ DAINTE, then turn left via ZERNEZ to LSZS.
- Refer to VFR SUP 004/2024 for further details regarding LSZS VFR procedures.
- Maintain radio contact with ZURICH DELTA (119.225) until passing FL 130, thereafter contact SAMEDAN INFO (135.325);

Arrival Chart



Do not use for navigation

Procedure for departure before changing to IFR:

(AIRAC AIP SUP: 008/2025)

- All flights departing to the south shall file their flight plan via **ROSGO Z83 DETRI Z119 SOSON N850** or via **RONAG L613 SUXAN**.
- The following procedure shall be applied:
- After departure from **RWY 03**, flights shall initially climb straight ahead.
- Then - when clear of terrain, considering wind and turn radius for the applicable IAS, flights shall turn right and proceed via **MALOJA** to **ROSGO**.
- After departure from **RWY 21**, flights shall proceed direct to **MALOJA**.
- After **MALOJA** - and when clear of terrain - flights shall proceed direct to **ROSGO**.

All departures planned via GUGSA Z83 DETRI may expect to change from VFR to IFR at ROSGO FL160.

Clearance from ZURICH ATC to enter LSR90 will be relayed by SAMEDAN AFIS.

The following procedure shall be applied:

Departures LSZS RWY 03

- After departure RWY 03, flights shall initially climb straight ahead.
- Then, when clear of terrain, considering wind and turn radius for the applicable IAS, flights shall turn right and proceed via MALOJA to ROSGO.

Departures LSZS RWY 21

- After departure from RWY 21, flights shall proceed direct to MALOJA.
- After MALOJA - and when clear of terrain - flights shall proceed direct to ROSGO.

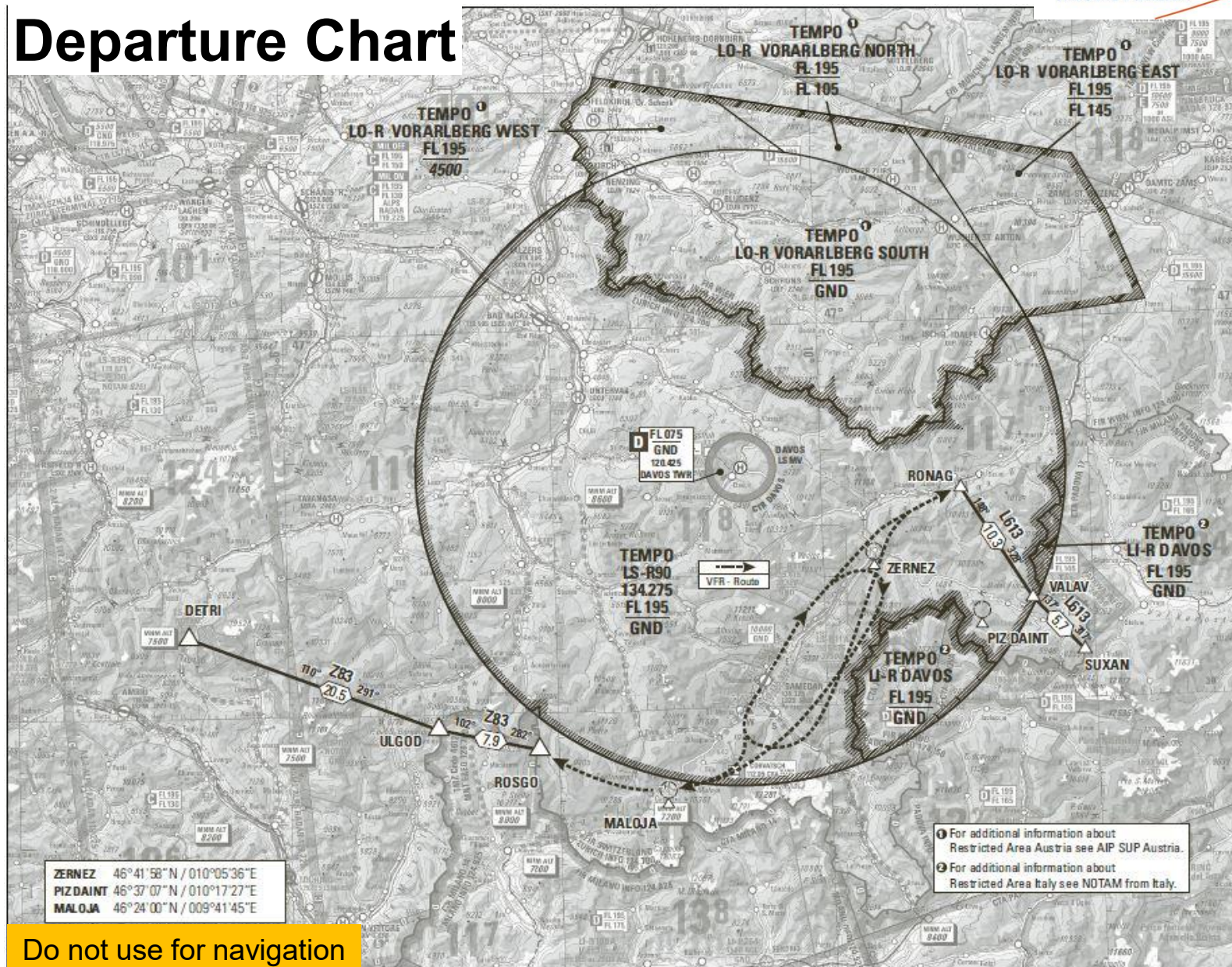
All departures planned via RONAG L613 SUXAN may expect SID RONAG 1E / 1V .

Clearance from ZURICH ATC to enter LSR90 will be relayed by SAMEDAN AFIS.

The following procedure shall be applied:

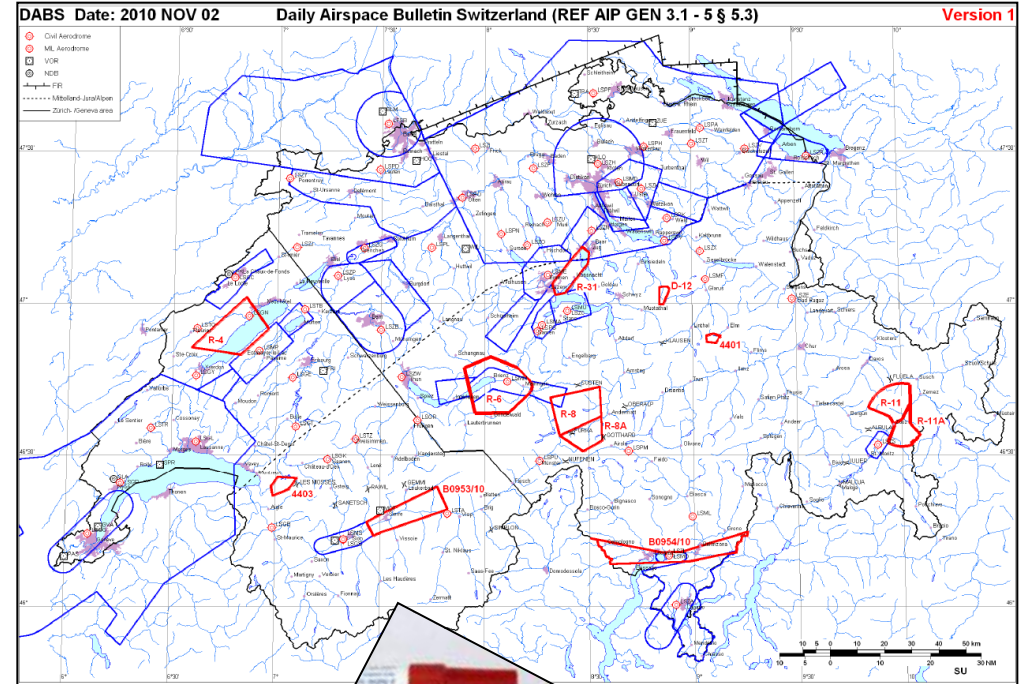
- Departures planned via RONAG L613 SUXAN may expect SID RONAG 1E / 1V if performance allows to cross RONAG at 16000ft AMSL or above.
- Otherwise expect to change from VFR to IFR at RONAG 16000ft AMSL.
- IFR Departures are allowed via SID RONAG1E/1V (ref. AIP Switzerland AD 2.22 LSZS Flight Procedures).

Departure Chart



Publications

- AIP SUP
(CH + AUT)
- NOTAM
- DABS
- Info websites



PPR Request / Confirmation



Request PPR for C/S: _____ REG: _____ Type of A/C: _____

Date of flight: ____ / ____ / 2026

With my signature I do hereby declare that I have read and understood the General Pilots Briefing WEF 2026:

Pilots Name: _____

Pilots Function: _____

Date: _____

Signature: _____

Please send this PPR request/ confirmation together with your handling request to:
Handling@engadin-airport.ch