

---

# SWITZERLAND

Phone:	+41 (0) 43 931 61 68
AFTN:	LSSAYOYX
Email:	aip@skyguide.ch

skyguide

AIP Services  
P.O. Box  
CH-8602 Wangen bei Dübendorf  
Switzerland

**AIRAC AIP SUP: 006/2024**

**Effective Date: 26-DEC-2024**

**End Date: 20-FEB-2025**

**Publication Date: 14-NOV-2024**

---

## World Economic Forum in Davos 2025

The World Economic Forum will be held in Davos from Monday 2025-01-20 from 0700 UTC until Saturday 2025-01-25 1600 UTC (Training Swiss Air Force (SAF) Friday 2025-01-17 from 0900 UTC until 1600 UTC).

The Federal Council has imposed restrictions on the use of the following airspace by civilian flights.

### 1. Temporary restricted area (TEMPO LSR90) Davos

#### Horizontal extent:

A radius of 25 NM around Davos (46°48'53" N / 009°50'58" E), above Swiss territory only (including the Principality of Liechtenstein).

#### Vertical extent:

GND to FL195.

### 2. Davos Control Zone (CTR)

#### Horizontal extent:

Centre Davos 46°48'53" N / 009°50'58" E, Radius 2.7 NM.

#### Vertical extent:

GND to FL075.

#### Airspace class:

Delta

#### Controlling Unit:

Davos Tower 120.425 MHz.

Chart: see section 9 below.

### 3. Activation Times of TEMPO LSR90 and CTR Davos

Friday 2025-01-17 from 0900 UTC until 1600 UTC

Monday: 2025-01-20 from 0700 UTC until Saturday 2025-01-25 1600 UTC (H24)

*Note: Changes to activation times may be announced via NOTAM, which may result in LSR90 and CTR Davos having different activation periods.*

### 4. Rules applicable within the Temporary Restricted Area (TEMPO LSR90) Davos for IFR Operations

Flights within the restricted area operating under instrument flight rules (IFR) are only permitted for air traffic with Departure / Arrival Samedan (LSZS) with Z- or Y- flight plans.

Special procedures apply for those flights as described in §8 of this Supplement.

---

#### 4.1 Radio Failure

In the event of a radio failure, the transponder shall be set to code 7600 and the following procedures apply.

Departure LSZS:

- under IFR continue according to FPL.
- under VFR return to LSZS.

Arrival LSZS:

- under IFR remain outside LSR and divert to alternate.
- under VFR, continue according approach chart to LSZS.

#### 5. Restricted areas over Austria and Italy

For the restricted areas over Austria & Italy, only the official publications of these countries are valid.

#### 6. General rules

ATC instructions shall be strictly complied with.

All publications, particularly additional NOTAMs, shall be checked and adhered to.

Additional restrictions may be imposed by the Swiss Air Force at all times (also on short notice).

Extensive MIL air traffic may exist also outside of the restricted area.

The lower limit of airspace C above the Alps during the activation period of LSR90 is FL130 (MIL ON).

Any flight departing from Switzerland seeking approval to insert STS/ATFMX in flight plan item 18 shall strictly adhere to the rules and procedures described in AIP Switzerland ENR 1.9 - 1 §2.3.

#### 7. ATS Route / FRA Connection Modifications and Flight Planning Procedures in FIR / UIR Switzerland

During the World Economic Forum in Davos, the following modifications concerning the ATS route network, FRA connections, airspace management, and flight planning procedures are applicable. The route category is not modified unless specifically mentioned below. Opening & closure times for ATS routes and FRA connections indicated below are planned values, which may be subject to change. Actual times will be communicated daily via EAUP/EUUP

DCT segments for flight planning will be managed using FUA restrictions detailed in the Route Availability Document (RAD). Such restrictions and corresponding applicability periods will be included in the daily EAUP/EUUP.

Friday: 2025-01-17 from 0900 UTC until 1600 UTC

Monday: 2025-01-20 from 0700 UTC until Saturday 2025-01-25 1600 UTC (H24)

ATS route L613 segment SUXAN-RONAG closed in direction SUXAN → RONAG (segment remains open in direction RONAG → SUXAN for DEP LSZS only).

ATS route L613 segment RONAG-MANEG closed (both directions).

ATS route Z408 segment TIRUL-RONAG closed.

ATS route Z119 segment DETRI-KUSAM closed (both directions).

ATS route Z50 segment KELIP-RESIA closed (both directions).

ATS route Y170 segment ABREG-ROMIR closed.

ATS route Z170 segment ARGAX-KUDIS closed.

ATS Route N851 segment ABESI-ELMUR closed. Alternative Routing is available via CANNE Z651 MANEG.

ATS route Z83 segment DETRI-GUGSA reclassified from "only by ATC" to conditional route category 1 (both directions) H24.

---

FRA connections via ABESI and ABREG are not available. Alternative FRA connections are available via CANNE.

FRA connections via RESIA are not available. Alternative southbound connections via GAMSA or ODINA.

Alternative northbound connection is available via CANNE.

FRA connections via SUXAN and SAFFA are not available. Alternative southbound connections via GAMSA. Alternative northbound connection is available via CANNE or MUNICH ACC / KARLSRUHE UAC.

## 8. Procedures for IFR flights to / from Samedan airport (LSZS)

Friday: 2025-01-17 from 0900 UTC until 1600 UTC

Monday: 2025-01-20 from 0700 UTC until Saturday 2025-01-25 1600 UTC (H24)

The following IFR and VFR procedures are temporarily suspended:

- SID PELAD 1W
- SID PELAD 1V
- VISUAL APCH WITH RNP GUIDANCE RWY 03
- RNAV APCH RWY 21
- Aerodrome VFR Area Chart for Y and Z ATC FPL

The following IFR procedures are available without using the dedicated holding at RONAG and after ATC instruction only (not available for flight planning):

- SID RONAG 1E
- SID RONAG 1V

PPR mandatory for flights with Y/Z flight plan to/from LSZS.

PPR managed by Engadin Airport. (see: [www.engadin-airport.ch](http://www.engadin-airport.ch)).

ATS Route Z83 segment DETRI-GUGSA only available and compulsory for DEST LSZS.

ATS Route Z83 segment ROSGO-DETRI only available and compulsory for DEP LSZS except via ATS route L613 RONAG-SUXAN.

All flights arriving from the south shall file their flight plan via Z651 DETRI Z83 GUGSA (then VFR).

All flights arriving from the north shall file their flight plan via N850 SOSON Z119 DETRI Z83 GUGSA (then VFR). All flights departing to the north (including DEST LSZH) shall file their flight plan via ROSGO Z83 DETRI Z651.

All flights departing to the south shall file their flight plan via ROSGO Z83 DETRI Z119 SOSON N850 or via RONAG L613 SUXAN.

The waypoint GUGSA (and the associated holding pattern) is the IFR clearance limit.

**All flights with destination LSZS that are unable to change from IFR to VFR at the latest at GUGSA shall divert to their alternate aerodrome.**

**Holding at GUGSA is limited to 1 holding pattern per flight.**

---

### 8.1 Procedure for approach before and after cancellation of IFR

Arrivals RWY 03 shall be prepared to cancel IFR latest at ROSGO.

After ROSGO, flights shall proceed VFR via MALOJA to LSZS.

If unable to cancel IFR latest at ROSGO, flights shall continue on Z83 into the GUGSA holding pattern and cancel IFR within the holding pattern.

If unable to proceed VFR to LSZS after GUGSA, flights shall leave the LSR via right turn ROSGO Z83 DETRI.

After IFR cancellation, proceed VFR south of Z83 via Maloja to LSZS.

Arrivals RWY 21 shall be prepared to cancel IFR latest at GUGSA.

After GUGSA, flights shall proceed VFR direct to PIZ DAINT, then turn left via ZERNEZ to LSZS.

Refer to VFR SUP 004/2024 for further details regarding LSZS VFR procedures.

### 8.2 Procedure for departure before changing to IFR

All departures planned via GUGSA Z83 DETRI may expect to change from VFR to IFR at ROSGO FL160.

The following procedure shall be applied:

- After departure RWY 03, flights shall initially climb straight ahead.
- Then, when clear of terrain, considering wind and turn radius for the applicable IAS, flights shall turn right and proceed via MALOJA to ROSGO.
- After departure from RWY 21, flights shall proceed direct to MALOJA.
- After MALOJA - and when clear of terrain - flights shall proceed direct to ROSGO.

Departures planned via RONAG L613 SUXAN may expect SID RONAG 1E / 1V only by ATC.

Otherwise expect to change from VFR to IFR at RONAG 16000ft AMSL.

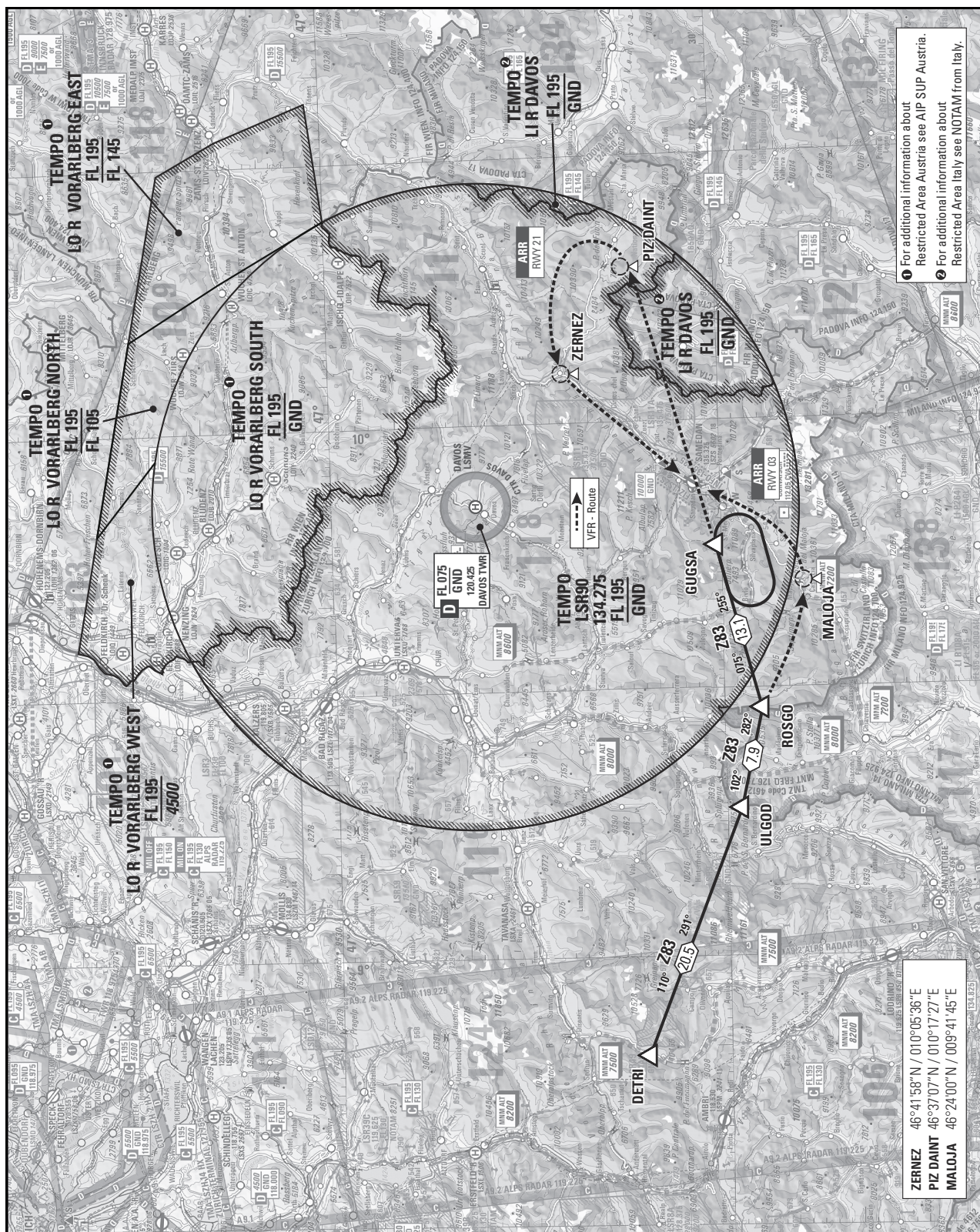
The following procedure shall be applied in case of a VFR departure:

- After departure RWY 03, climb straight ahead. When clear of terrain, proceed via ARDED to RONAG.
- After departure RWY 21, climb straight ahead. When clear of terrain, turn left (remain within Swiss airspace) and proceed via ARDED to RONAG.
- Clearance from ZURICH ATC to enter LSR90 will be relayed by SAMEDAN AFIS.

Refer to VFR SUP004/2024 for further details regarding LSZS VFR procedures.



### 9.1 LSZS Arrival chart 25 NM





## 9.2 LSZS Departure chart 25 NM

