

# WEF 2024

WORLD  
ECONOMIC  
FORUM



- **General Pilot Briefing «WEF 2024» for IFR leaving  
and joining flights (Y/Z flightplans)**

- **For detailed information check NOTAMs**

# Airspace Restrictions

(AIRAC AIP SUP: 003/2023)

- Airspace restrictions related to World Economic Forum 2024 lasts on Friday 12<sup>th</sup> January and from Monday 15<sup>th</sup> until 20<sup>th</sup> January 2024
- PPR mandatory for flights with Y/Z flight plan to/from LSZS
- PPR managed by Engadin Airport.

→ Refer to [www.engadin-airport.ch](http://www.engadin-airport.ch)

- The PPR-number that you will get with our confirmation, has to be inserted in field 18 of your flightplan.

# Airspace Restrictions

## General Rules for joining/leaving operations:

(AIRAC AIP SUP: 003/2023)

- Flights within the restricted area operating under instrument flight rules (IFR) are only permitted for air traffic with DEP / DEST Samedan (LSZS) using Z- or Y- flight plans.  
Special procedures apply for those flights as described on page 8 and page 9 of this briefing.
- **Radio Failure:**  
In the event of radio failure, the flight shall continue in accordance with the last clearance received and confirmed to destination.  
The transponder code 7600 shall be activated. (In such cases a visual identification by the Swiss Air Force may be expected.)

# Airspace Restrictions

## General Rules for joining/leaving operations:

(AIRAC AIP SUP: 003/2023)

- Additional restrictions may be imposed by the Swiss Air Force at all times (also at short notice).
- Extensive MIL air traffic may exist also outside the restricted area.
- The lower limit of Airspace C over the Alps during the activation period of LS-R90 is FL130.
- All publications, particularly additional NOTAMs, shall be checked and adhered to.
- ATC instructions shall be strictly complied with.
- Any flight departing from Switzerland seeking approval to insert STS/ATFMX in flightplan item 18 shall strictly adhere to the rules and procedures described in AIP Switzerland ENR 1.9.2.2/3.

# Activation of LS-R90

## Restriction of the airspace within CH and FL

(AIRAC AIP SUP: 003/2023)

- **Activation:**

Friday                    2024/01/12 from 0900 – 1600 UTC

and

Monday 2024/01/15 from 0700 UTC

until

Saturday                2024/01/20 1600 UTC (H24)

**Note:** Changes to activation times may be announced via NOTAM, which may result in LS-R 90 and CTR Davos having different activation periods.

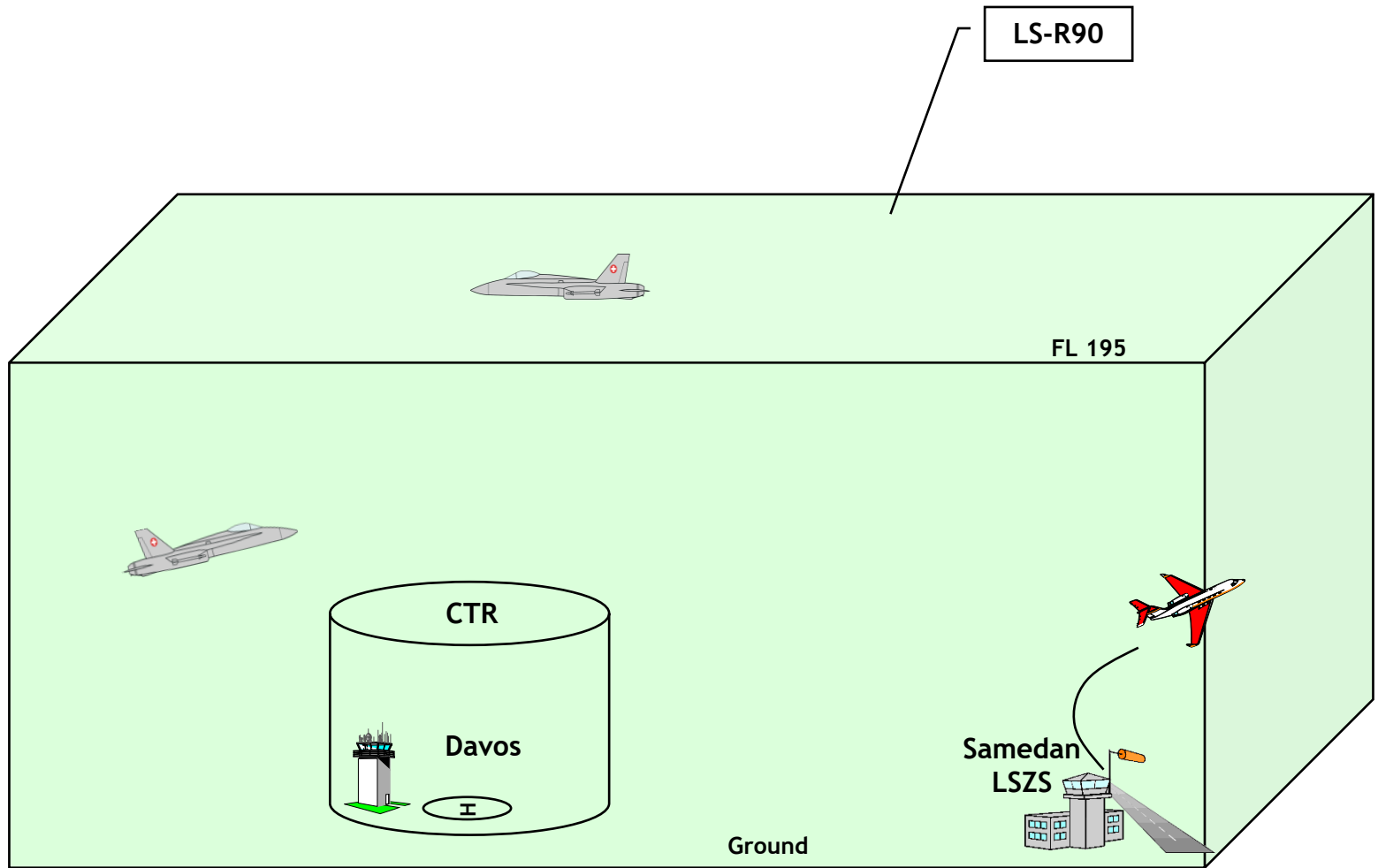
# LS-R90 TEMPO Restricted Area

(AIRAC AIP SUP: 003/2023)

Dimension basically identical to WEF 2024

- Centre: Davos 46°48'53"N/009°50'58"E, Radius **2.7NM**  
**GND to FL075**
- Dimensions:
  - Lateral: **25 NM** radius around Davos above Swiss territory only (including the Principality of Liechtenstein).
  - Vertical extent:  
Tempo **LS-R90**: **GND to FL 195**

# Pattern R-Area



# Procedures for IFR flights to / from Samedan Airport (LSZS)

(AIRAC AIP SUP: 003/2023)

Friday 2024-01-12 from 0900 UTC until 1600 UTC

Monday 2024-01-15 from 0700 UTC until Saturday 2024-01-20 1600  
UTC (H24)

The following IFR procedures are temporarily suspended:

- SID PELAD 1W
- SID PELAD 1V
- RNAV (GNSS) APP with RNP guidance RWY 03
- RNAV (GNSS) APP RNP APCH RWY 21



# Procedures for joining/leaving flights to / from Samedan Airport (LSZS)

(AIRAC AIP SUP: 003/2023)

The following IFR procedures are available without using the dedicated holding at RONAG and after ATC instruction only (not available for flight planning):

- SID RONAG 1E
- SID RONAG 1V
- PPR mandatory for flights with Y/Z flight plan to/from LSZS.
- PPR managed by Engadin Airport. (see: [www.engadin-airport.ch](http://www.engadin-airport.ch)).

# Routing for arrivals LSZS with Y-FPL

(AIRAC AIP SUP: 003/2023)

- **ATS Route Z83 segment DETRI-GUGSA (and vice versa) only available and compulsory for ADEP/ADES LSZS except ADEP LSZS via ATS Route L613 segment RONAG-SUXAN.**
- All flights arriving from the **south** shall file their FPL via *Z651 DETRI Z83 GUGSA (then VFR)*;
- All flights arriving from the **north** shall file their FPL via *N850 SOSON Z119 DETRI Z83 GUGSA (then VFR)*.
- **The reporting point GUGSA and the associated holding pattern are the IFR clearance limit.**
- **All flights with destination LSZS that are unable to cancel their IFR flight plan latest at GUGSA shall divert to their alternate aerodrome.**
- **Holding over GUGSA is limited to 1 holding pattern per flight.**

## Arrivals LSZS RWY 03

### Procedure for approach after IFR cancellation:

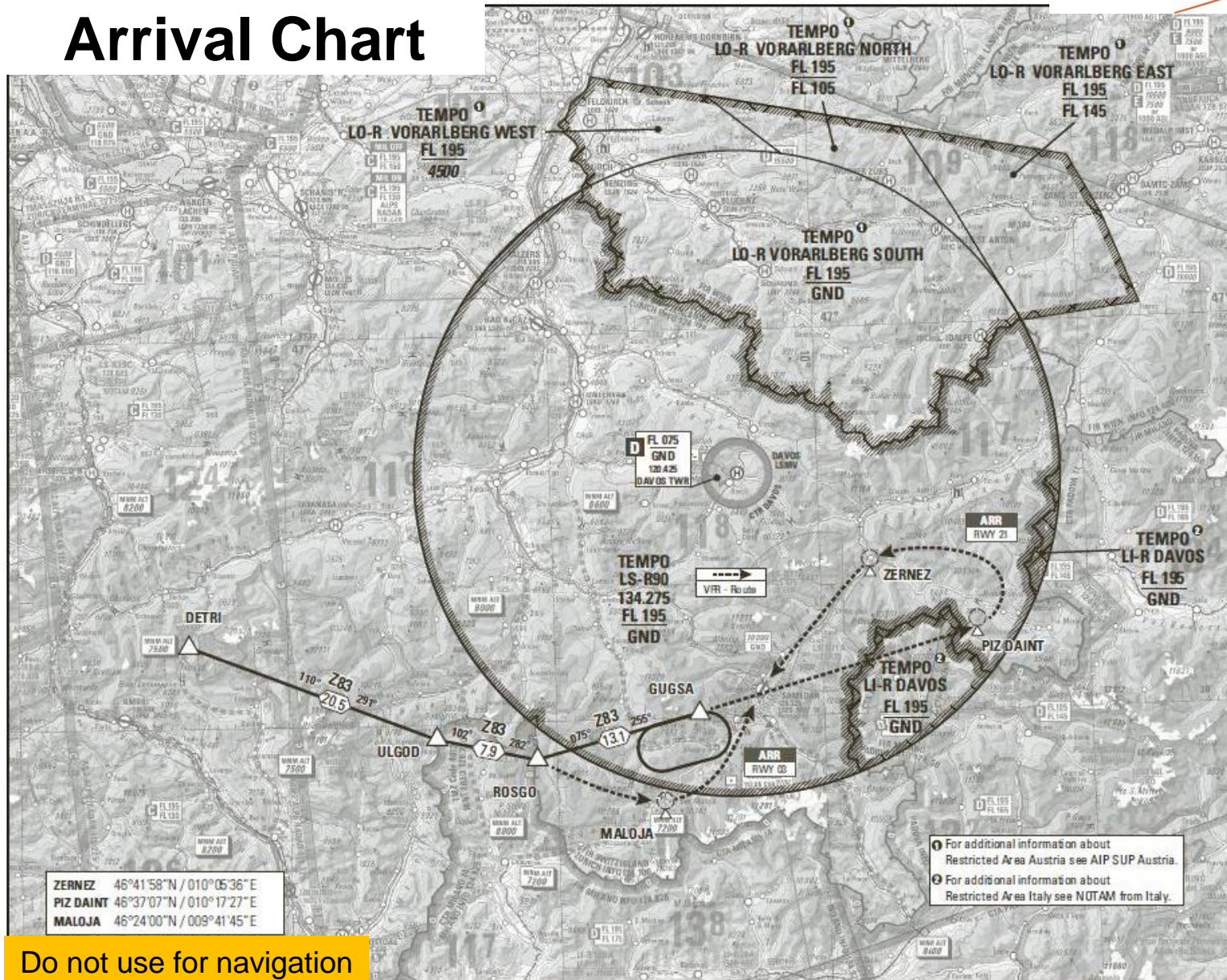
- Arrivals to RWY 03 shall prepare to cancel IFR at ROSGO.
- After ROSGO, such flights shall proceed VFR via MALOJA to LSZS.
- If unable to cancel IFR at ROSGO, flights shall continue on Z83 into the GUGSA holding and then cancel IFR within the holding pattern.
- After IFR cancellation, proceed VFR south of Z83 via Maloja to LSZS.
- Maintain radio contact with ZURICH DELTA (119.225) until passing FL 130, thereafter contact SAMEDAN INFO (135.325);

## Arrivals LSZS RWY 21

### **Procedure for approach after IFR cancellation:**

- Arrivals to RWY 21 shall prepare for IFR cancellation at GUGSA.
- After GUGSA, such flights shall proceed VFR direct to PIZ DAINTE, then turn left via ZERNEZ to LSZS.
- Maintain radio contact with ZURICH DELTA (119.225) until passing FL 130, thereafter contact SAMEDAN INFO (135.325);

# Arrival Chart



Do not use for navigation

# Procedure for departure before changing to IFR:

(AIRAC AIP SUP: 003/2023)

- **All departures being planned via ROSGO Z83 DETRI shall expect to change from VFR to IFR at ROSGO:**
- The following procedure shall be applied:
- After departure from **RWY 03**, flights shall initially climb straight ahead.
- Then - when clear of terrain - flights shall turn right and proceed via MALOJA to ROSGO.
- After departure from **RWY 21**, flights shall proceed direct to MALOJA.
- After MALOJA - and when clear of terrain - flights shall proceed direct to ROSGO.

***Departures being planned via RONAG L613 SUXAN may expect SID RONAG 1E / 1V after ATC instruction only. Otherwise expect to change from VFR to IFR at RONAG.***

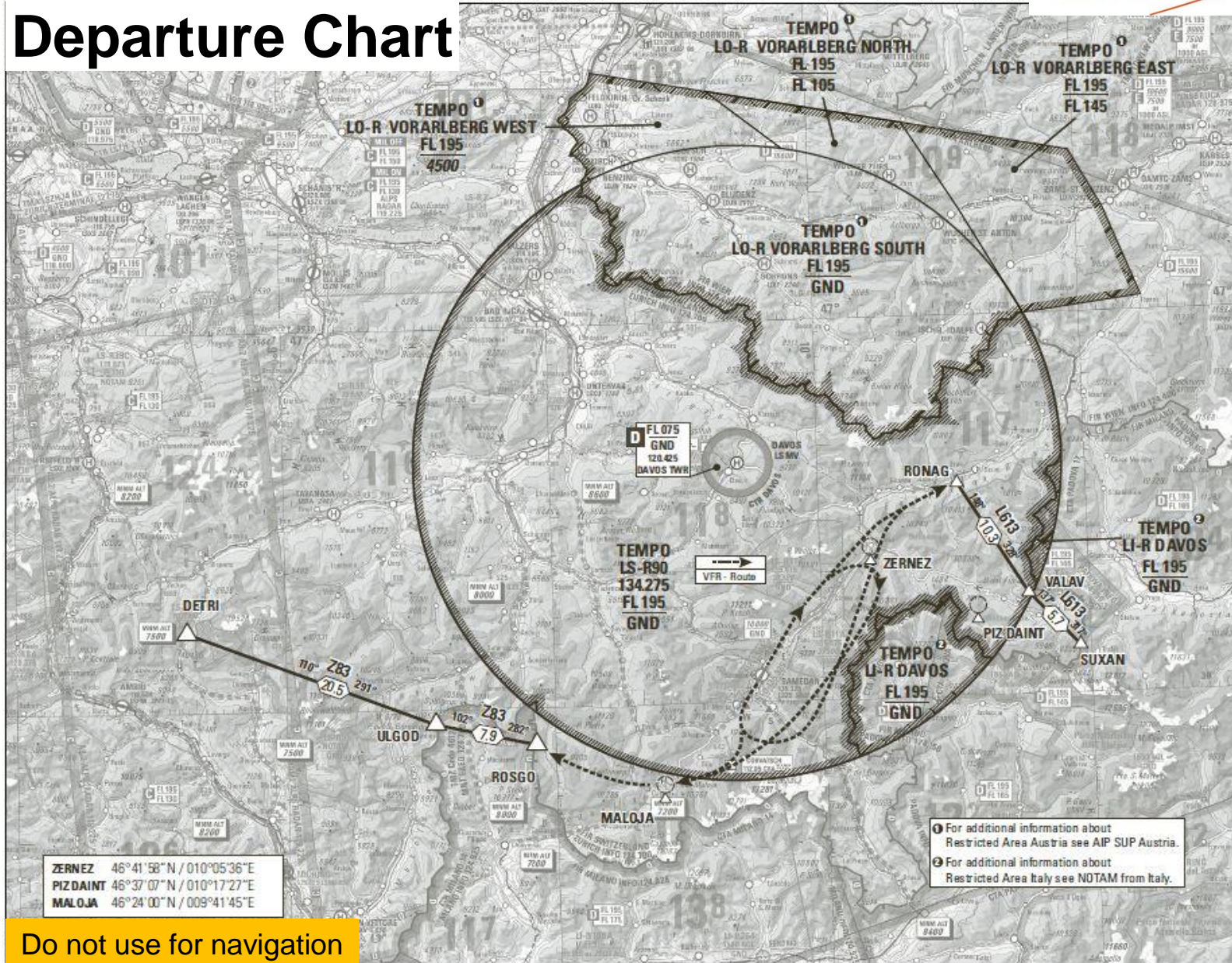
## **Departures LSZS RWY 03**

- After departure from RWY 03, climb straight ahead, then - when clear of terrain, proceed via ARDED to RONAG;
- Clearance from ZURICH ATC to enter LS-R90 will be relayed by SAMEDAN AFIS.

## **Departures LSZS RWY 21**

- After departure from RWY 21 climb straight ahead, when clear of terrain, turn left, remain within Swiss airspace, proceed via ARDED to RONAG
- Clearance from ZURICH ATC to enter LS-R90 will be relayed by SAMEDAN AFIS.

# Departure Chart



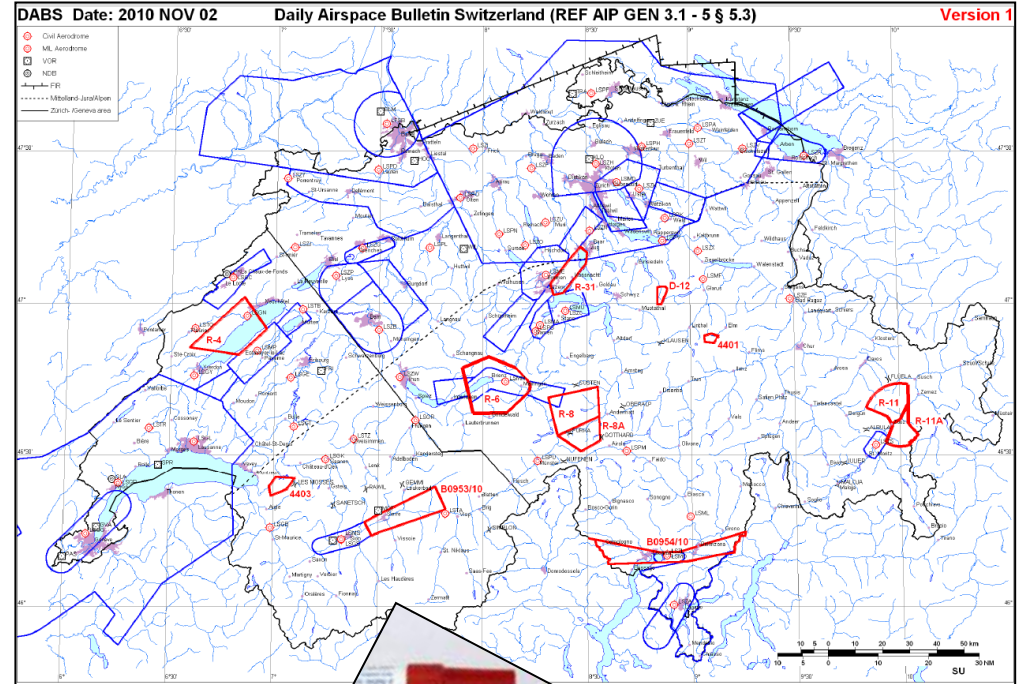
① For additional information about Restricted Area Austria see AIP SUP Austria.  
 ② For additional information about Restricted Area Italy see NOTAM from Italy.

**Do not use for navigation**



# Publications

- AIP SUP  
(CH + AUT)
- NOTAM
- DABS
- Info websites



# PPR Request / Confirmation



Request PPR for C/S: \_\_\_\_\_ REG: \_\_\_\_\_ Type of A/C: \_\_\_\_\_

Date of flight: \_\_\_\_ / \_\_\_\_ /2024

With my signature I do hereby declare that I have read and understood the General Pilots Briefing WEF 2024:

Pilots Name: \_\_\_\_\_

Pilots Function: \_\_\_\_\_

Date: \_\_\_\_\_

Signature: \_\_\_\_\_

**Please send this PPR request/ confirmation together with your handling request to:**  
[Handling@engadin-airport.ch](mailto:Handling@engadin-airport.ch)